

Who does the eye belong to?

Cumbria Amphibian and Reptile Eye ID Quiz



Cumbria Amphibian and Reptile Group

Education Outreach Coordinator:

Ashleigh Toomey

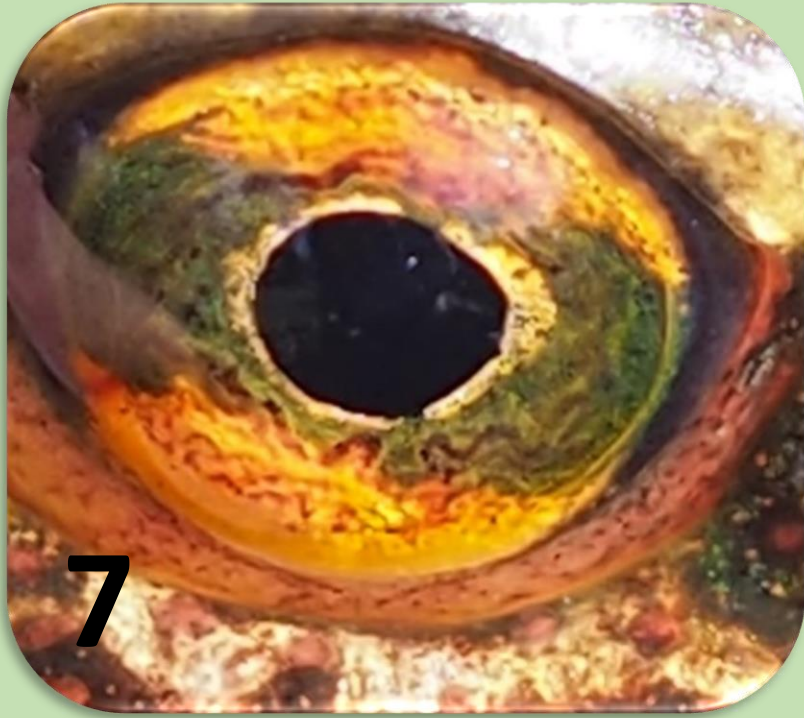
Email: edoutreach.cumbria.arg@gmail.com



Frogs and Toads



Lizards



Newts



Snakes

ANSWERS





1 Common toad 2 Common frog 3 Natterjack toad

Frogs and Toads

**All photographers are credited in the photos used*



4 Common lizard



5 Sand lizard



6 Slow worm

Lizards

**All photographers are credited in the photos used*



7 Smooth newt

8 Great crested
newt

9 Palmate newt

Newts

**All photographers are credited in the photos used*



10 Grass snake



11 Adder



12 Smooth snake

Snakes

**All photographers are credited in the photos used*