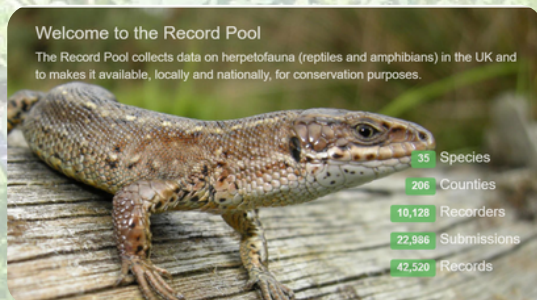


## How we can help you

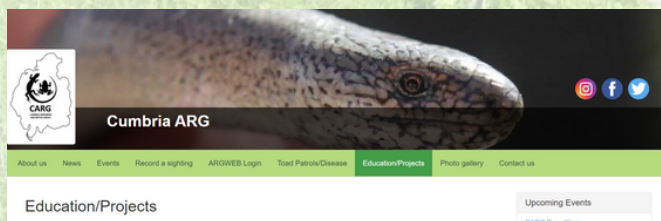
Email us at: [cumbria.arg@gmail.com](mailto:cumbria.arg@gmail.com)  
and request an 'Amphibian and  
Reptiles on Allotments' outreach pack

Join us on Facebook: Cumbria  
Amphibian and Reptile Group (CARG) -  
and share your sightings, ask for  
identifications, learn about the  
animals habits and life cycle etc.

Don't forget to record your sightings  
at: [www.recordpool.org.uk](http://www.recordpool.org.uk)



You can also find helpful informative  
posters on native UK amphibians and  
reptiles on our website:  
<https://groups.arguk.org/carg>  
under 'Education/Projects'



Have you seen a reptile or  
amphibian on your allotment?

Did you want to learn more  
about them?

Did you know most of our  
amphibians and reptiles are  
in decline?

Do you want to create or  
enhance habitat for them  
on your plot?

Would you like to help the  
conservation of our native  
species?

This leaflet will help answer  
the above questions  
and more



Cumbria Amphibian  
and Reptile Group

# Amphibians and Reptiles on Allotments



Cumbria Amphibian and  
Reptile Group



Allotments can be amazing sites for wildlife. The huge variety of habitats can attract all sorts of animals, from pollinators visiting flowers, to slugs and other invertebrates, which then bring in their predators as well. Amphibians and reptiles are great natural form of pest control for allotments.



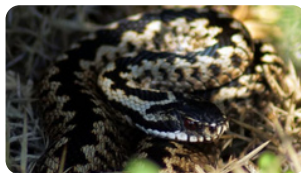
*Photo by Kathy Smith: Frog eating a slug*

Although reptiles and amphibians tend to be secretive in their habits, some species can regularly be seen on allotments. Frogs and newts can be found in the damper spots and toads can be found in and around pots, all emerging at dusk to eat slugs and other invertebrates. Slow worms, common lizards and grass snakes are also commonly found on allotments. Although our adder population is in a steep decline, they can also be seen on allotments occasionally.

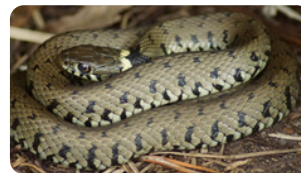
Unfortunately, many of our native species of amphibians and reptiles are in decline, but they do not have the same public appeal that more iconic mammal species receive, such as hedgehogs, pine marten and water voles.

## Meet the species

Adder



Grass snake



Viviparous lizard



Slow worm



Common frog



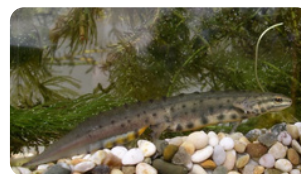
Common toad



Palmate newt



Smooth newt



*Smooth and Palmate Newts can be difficult to tell apart, but our ID guides and/or our support can help.*

Great crested newt



See **"How we can help you"** for more help with identification and habitat advice.

*Photos by ARC Trust 2020*

## About CARG

The Cumbria Amphibian and Reptile Group is an independent voluntary conservation group, affiliated to the national organization, ARG-UK. Our focus is the conservation of native amphibian and reptile species, especially with surveying, habitat management, public engagement, volunteer training & doing as much as possible to understand & protect the native species in this county. Typically we work with land owners and managers with surveys and conservation advice on their sites.

We are setting up an outreach type of support for allotment associations and allotment plot holders who would like advice or guidance for amphibians or reptiles on their allotments. As allotments are made up of individual plots they do not make great sites for our usual type of wide ranging survey. However, an allotment can be a vital oasis in a desert of development. You can help us (and the animals) by being our eyes on the ground and submitting sightings and we can help you by supplying advice, guides and support. Between us we can make a huge difference to local populations of amphibians and reptiles. See overleaf on how to get in touch.